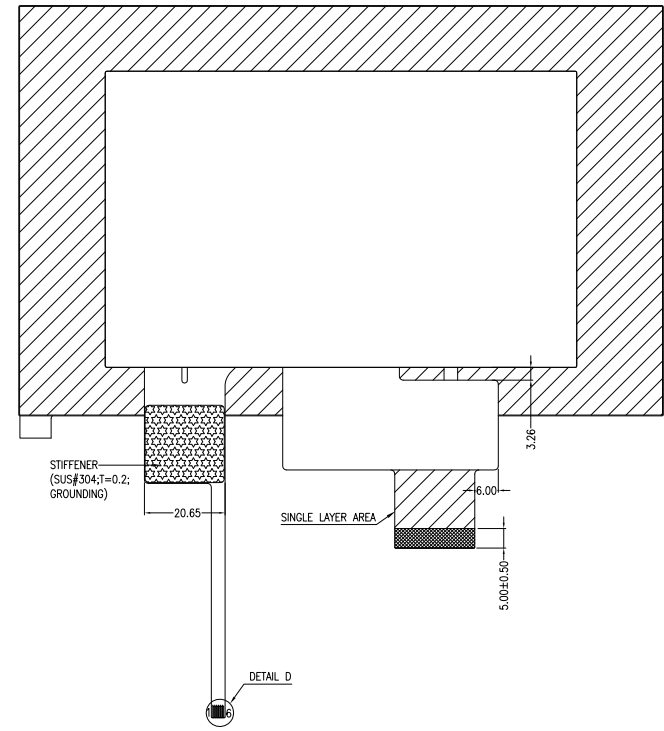
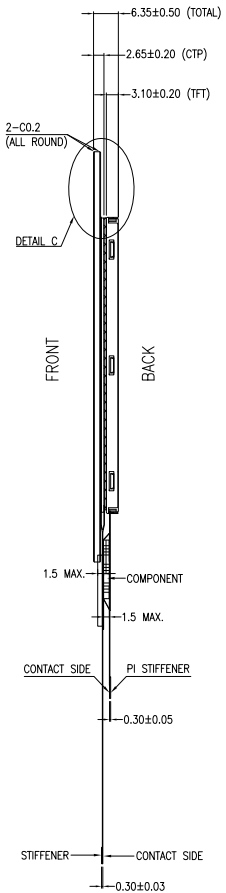
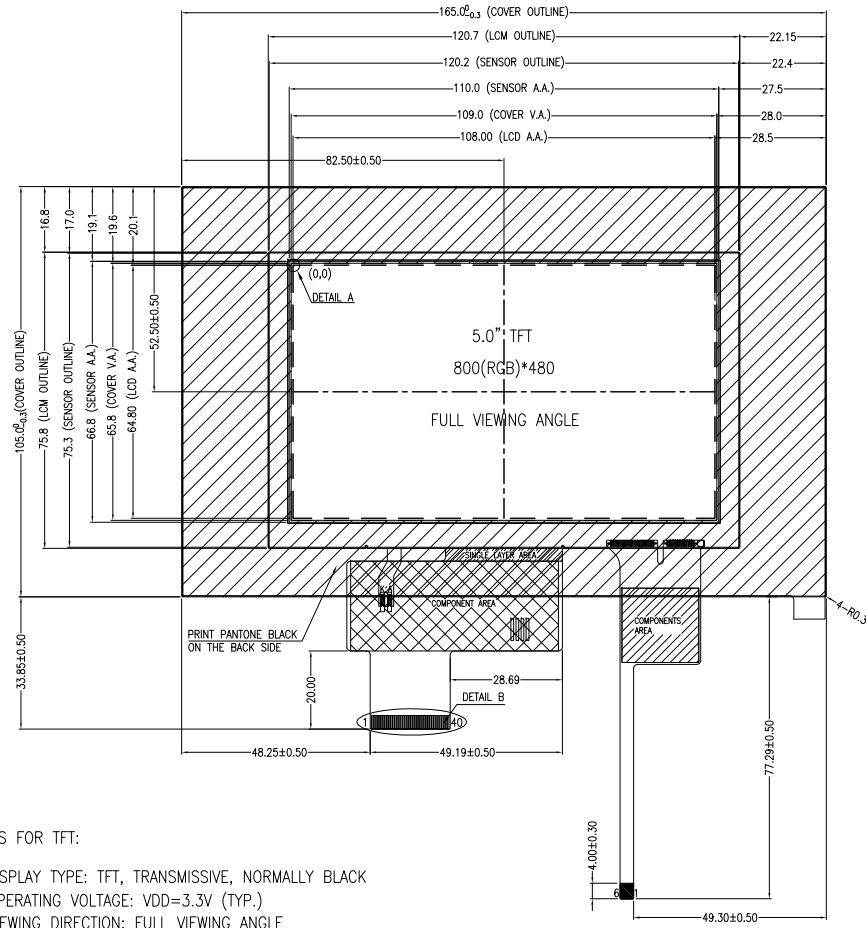


NO MECHANICAL HOUSING TO HOLD THE TFT AND THE TOUCH PANEL ON THIS PRODUCT, SO THE END UNIT'S MECHANICAL DESIGN MUST INCLUDE A HOUSING FOR PREVENTING THE SEPARATION OF THE TFT AND THE TOUCH PANEL.



TFT PIN DESCRIPTION	
PIN	SYMBOL
1	LED_K
2	LED_A
3	NC(GND)
4	VDD
5	R0
6	R1
7	R2
8	R3
9	R4
10	R5
11	R6
12	R7
13	G0
14	G1
15	G2
16	G3
17	G4
18	G5
19	G6
20	G7
21	B0
22	B1
23	B2
24	B3
25	B4
26	B5
27	B6
28	B7
29	GND
30	CLK
31	DISP
32	HSYNC
33	VSYNC
34	DE
35	NC
36	GND
37	NC(XR)
38	NC(YD)
39	NC(XL)
40	NC(YU)

CTP PIN DESCRIPTION	
PIN	SYMBOL
1	RST
2	INT
3	SDA
4	SCL
5	GND
6	VCC(2.8~3.3V)

NOTES FOR TFT:

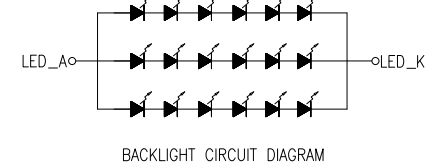
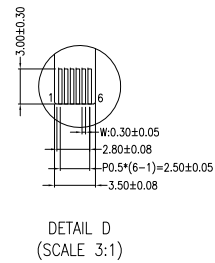
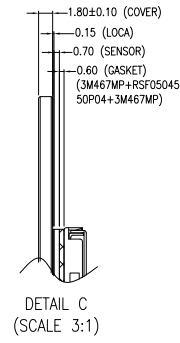
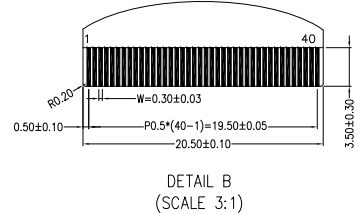
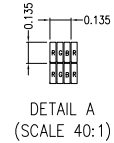
1. DISPLAY TYPE: TFT, TRANSMISSIVE, NORMALLY BLACK
2. OPERATING VOLTAGE: VDD=3.3V (TYP.)
3. VIEWING DIRECTION: FULL VIEWING ANGLE
4. DRIVER IC: ST7262
5. LED BACKLIGHT: WHITE LED, If=60mA, Vf=19.2±1.2V
6. TOP POLARIZER SURFACE TREATMENT: ANTI-GLARE

NOTES FOR CTP:

1. 5.0 INCH PROJECTIVE CAPACITIVE TOUCH PANEL
2. COVER GLASS + SENSOR GLASS + FPCA
3. OPERATING VOLTAGE: VCC=2.8V~3.3V
4. DRIVER IC: ILI2511
5. MULTI FINGER: UP TO 10
6. HARDNESS OF COVER SURFACE: 7H(750g)
7. FIRMWARE FILE: MI0500DIP-C1_FIRMWARE_6.0.0.0.FF.5.D.1 20210611

NOTES FOR OTHERS:

1. OPERATING TEMP.: -30°C ~ 85°C
2. STORAGE TEMP.: -30°C ~ 85°C
3. SURFACE LUMINANCE: 510 CD/M² (TYP.) WITH CTP
4. ONLY THE SINGLE LAYER AREA ON FPC IS BENDABLE AND THE MINIMUM BEND RADIUS IS 1.5MM
5. GENERAL TOLERANCE: ±0.3MM
6. ROHS COMPLIANT



03	ADD FIRMWARE FILE CHANGE THE OPERATING AND STORAGE TEMPERATURE	CAROL	2023.06.12	DRAWN BY:	CAROL	2019.08.30	MODULE P/N:	MI0500AHT-3CP
02	MODIFY PIN3 FROM NC TO NC(GND)	CAROL	2019.10.24	CHECKED BY:			SCALE : 1/1	
01	FIRST ISSUE	CAROL	2019.08.30	APPROVED BY:			UNIT: mm	DESCRIPTION:
VER.	REVISED DESCRIPTION	REVISER	DATE	VERSION NO:	03		SHEET NO.: 1/1	TFT + CTP MODULE



MULTI-INNO TECHNOLOGY CO.,LTD.